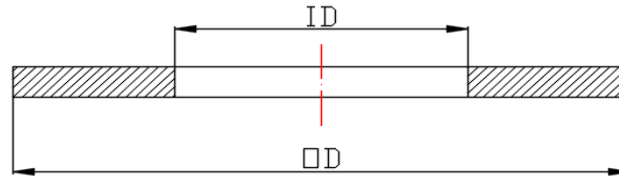




Technical Solutions s.r.l

Tipo Flange senza fori ASME/ANSI B16.5 300 - 400 - 600 - 900LB



Inch	ID	OD 300LB	OD 400LB	OD 600LB	OD 900LB
1/2"	22	53	53	53	63
3/4"	27	66	66	66	69
1"	34	73	73	73	79
1"1/4	43	82	82	82	88
1"1/2	49	95	95	95	98
2"	61	111	111	111	142
2"1/2	74	130	130	130	165
3"	89	149	149	149	168
3"1/2	102	165	162	162	...
4"	115	180	177	193	206
5"	142	215	212	241	247
6"	169	250	247	266	289
8"	219	307	304	320	358
10"	274	361	358	400	434
12"	324	422	419	457	498
14"	356	485	482	492	520
16"	407	539	536	565	574
18"	458	596	593	612	638
20"	508	654	647	682	698
24"	610	774	768	790	838